

The

Soundoff

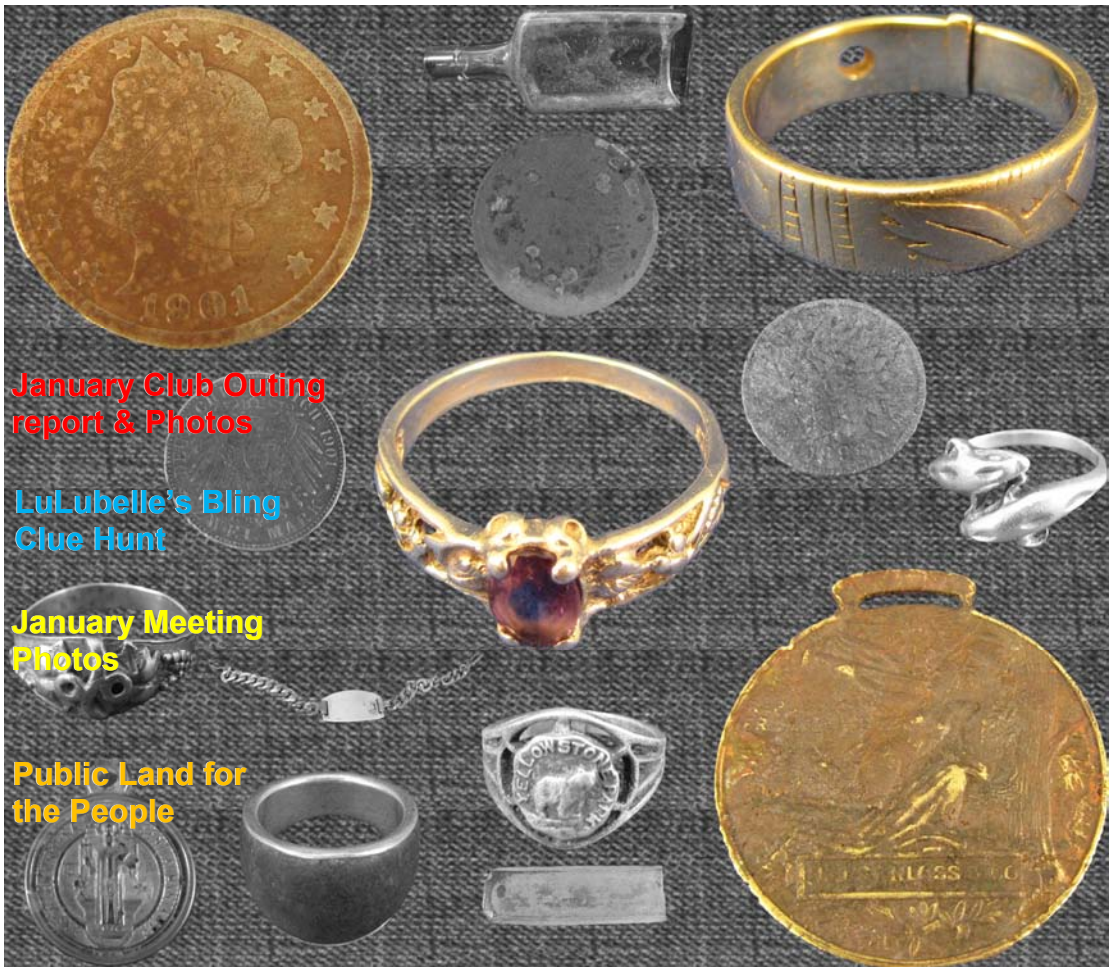
EUREKA! Treasure Hunters Club, Inc.



V. 40 n. 2 February, 2012

Search with Care!

Visit Our Club On The Internet at <http://www.eurekathc.com>



About *Soundoff*

Soundoff is the official newsletter of the Eureka! Treasure Hunters Club, Inc. (Eureka!). Mailing Address: PO Box 101385, Denver, CO 80250-1385.

Opinions expressed in *Soundoff* are those of the authors and do not necessarily reflect those of the club or its members. Publication of information in *Soundoff* constitutes no guarantee of accuracy. Use of any information found in this publication is at the sole risk of the user. Neither Eureka!, nor its officers, nor *Soundoff*, nor its editors or contributors assume any liability for damages resulting from use of information in this publication.

Submissions

Articles, letters and short items of interest on prospecting, detecting and treasure hunting topics are welcomed and encouraged. All items submitted for publication are subject to editing. Submittals for publication or correction of errors may be made by e-mail in ASCII text format or MS Word. All article submissions must be received by the editor no later than the deadline of the month (see calendar, p. 16) for inclusion in the next month's issue. Include publication information on articles clipped from other publications.

Copyright

Unless otherwise noted, other nonprofit groups may reprint or quote from any articles appearing in *Soundoff* without prior permission, provided that proper author and publication credits are given and that a copy of the publication in which the article appears is sent at no cost to Eureka! at the above mailing address. Clubs wishing to exchange newsletters with Eureka! are invited to send a copy of their newsletter together with an exchange request.

Advertising

Classified business-card-sized text advertising is free to members for non-business ads. Commercial display ads are available to anyone at the following charges: business card size, \$6.00 per month; 1/4 page, \$12.00 per month; 1/2 page, \$24.00 per month; full page, \$48.00 per month. Advertisers are encouraged to take out ads for 12 months and receive a 3-month discount. No other discounts apply. The treasurer must receive any required payments for commercial ads prior to their inclusion.

About Eureka!

Eureka! is a Denver-based, Colorado nonprofit organization established in 1973 for the enjoyment of metal detecting, electronic prospecting and treasure hunting. Its purpose is to provide an educational and social forum of mutual benefit for members. Eureka! holds a monthly meeting and conducts various special presentations, hunts and seminars. Members have voting privileges. Membership includes a subscription to *Soundoff*, all general meetings and selected seminars. Annual dues are \$30 for single adult membership, \$36 for a family membership and \$15 for a Junior membership. Pro-rated dues may be paid by any member joining the club after the May 1 dues date. Club meetings are held on the second Friday of each month, 7:30 p.m., on the second floor of the Clement Community Center, 1580 Yarrow St., Lakewood, Colorado.

Next Club Meeting
2nd Friday, February 7:30 p.m.
at the
Clement Community Center
1580 Yarrow Street, Lakewood,
Colorado
Hotline: (303) 595-5448
www.eurekathc.com

Contents

1. F.O.M. photos
2. About Soundoff!
3. January Outing *by Cindy Bockenstedt*
4. Secretary's Report *by Louise Smyth*
5. Prez Sez *by Ron Erickson*
6. LuLu'belles Lost Bling *by Louise Smyth*
7. Finda of the Month Winners
8. January Outing (cont.)
9. February Meeting
10. Calendar Of Events
11. Outing Photos
12. Handbook Excerpts
13. Handbook Excerpts
14. Members Service Directory
15. How to Find Eureka! Monthly Meetings
16. In Town Hunt Information
17. Finds Of the Month Entrees
18. Advertisements
19. Contact List
- 20/21. Outing Photos
- 22/23. Meeting Photos
- 24-27. PLP Information
28. Space for notes

Geology Museum Tour Did Not Disappoint

by Cindy Bockenstedt

On January 22, 2012, more than thirty Eureka Treasure Hunters Club members and about ten guests went to the Colorado School of Mines Geology Museum. Our outing was free and we had the director, Bruce Geller, and a student lead the tour. The director was very knowledgeable, personable and passionate. The power was out on Campus when we got there and the emergency lights were on. About 20 minutes into the tour the lights came back on.

We saw all the new exhibits showing the



Cindy between a split amethyst display

rocks and minerals on loan as well as a micro exhibit where collectors use microscopes and have tiny specimens. After the tour, many stayed to see their great large gold and silver displays from Colorado mines that are part of the permanent collections, or checked out the section on meteorites.

As promised, we saw a moon rock and come to find out, there was a second rock from the moon also. The fossil section was small but interesting. The main floor of the museum had amazing mineral displays, while the lower floor had a learning area with an introduction to minerals and a geology history section about how rocks are formed and their types. A mine exhibit also included a spectacular group of phosphorescent minerals.

(Continued on page 8)

Page 3

Secretary's Report

January 13, 2012

President Ron Erickson called the January meeting to order at 7:30. There were approximately 69 members present and several guests, including **Reggie Spielberg, Jim Geith, Jorge Sanchez** and **Chris Leal**.

Thanks to everyone who brought munchies! The February meeting is Potluck Night—all members are to bring a favorite dish.

The Club had a great time at the Colorado School of Mines Museum of Geology. Bruce Geller gave the Club a very informative tour.

The Club is compiling a list of members and the services they can provide, e.g. plumbing or electrical wiring. This Service Directory will come in handy for fellow members when they're looking to hire someone to work on household projects. Submit listings to Jeff Lubbert, coindigr@hotmail.com.

The Club is also looking for suggestions for speakers at the Club's meetings. If you have any ideas for a great hunt, tell the board members—even suggest just a hunt site. Also, we're taking a survey of just how much members are willing to pay for a great planted hunt, e.g. hunts planted with silver coins or Civil War relics. Let the board members know your ideas.

We're always looking for articles and news for this newsletter. If you have anything to submit or any suggestions, contact Jeff Lubbert, coindigr@hotmail.com.

The Club has made a large purchase of coins. Stay tuned for info about next spring's Moose Hunt.

Lulu's Bling Clue Hunt

Cindy Bockenstedt found January's Bling.

General Drawing

Gold Nugget Drawing (1.2 gr)

Delmar O'Dell

Christmas Drawing (Crystallized Silver Specimen)

Cindy Bockenstedt

General Drawing

1930 Standing Liberty Quarter

Linda Erickson

1807 Large Cent

Mary Norden

1981 Proof Quarter

Ron Norden

1871S Seated Lib Half Dollar

Bernie Watts

1885 Flying Eagle Cent

Addie Otis

1910 V Nickel

Joe Johnston

1894 Barber Half Dollar

Bernice Ortiz

1908D Barber Dime

Bernie Watts

1945 Dos Peso

Jim Geith

1876 Indian Head Penny

Bob Flier

Last Chance Drawings

DVD

Bernie Watts

Seated Liberty Quarter

Fran Espinoza

Membership Drawing

1877 Seated Liberty Half Dollar

The Prez Sez

By Ron Erickson



Feb Prez says what his wife tells him to

I was talking to several club members the other day, spent some time on the internet researching and following discussions on this topic, and I am becoming increasingly concerned about the future of our hobby. Our hobby is under attack. Even our ability to hunt in parks is in jeopardy. For those interested in searching for relics, it is no secret that there are groups out there who don't care for the way we spend our leisure time.

Alabama currently has a bill before the Senate—SB-81—that will make the current laws of their state easier to understand with respect to the definition of an artifact. Archaeologists are doing everything they can to kill the bill so that they can continue to have exclusive rights. Please visit <http://ssdsupply.blogspot.com/> to read in more detail what is taking place in Alabama. You do not need to be a resident of the state of Alabama to voice your support for this bill and there is a link to do that on the blogspot page listed above. Help keep public lands public!

We don't need any more problems in keeping our hobby legal in our own cities and state. Remember, the way we influence the public is by our actions. Please be a responsible hunter and represent our hobby professionally. You never know who may be watching.

The city of Wheat Ridge parks are still off limits but we have some hope. Several club members attended the city council meeting and presented our case. It might be time for a follow up and we may need to show a bigger presence with more mem-

bers in attendance. Will you help out?

We had a great turn out for the tour at the School of Mines Geology Museum. It was a good time and we saw a lot of interesting displays. Thanks to Cindy for setting up this group outing. The displays are rotated out in August and it was suggested that we return next year for another private tour.

Happy Responsible Hunting,

Ron



Members watching the 2011 year in review



Another Spyderco knife, Jim Parriott

LuLubelle's Lost Bling

A cryptogram is an encoded message. The code used is called a simple substitution cypher. This means that the message is encoded by replacing each character in the message with a letter of the alphabet. Every time a particular character occurs in the message, it is replaced with the same code letter. Word spacing and punctuation are not changed.

Some people like to solve cryptograms much like some people like to do crossword puzzles. The cryptogram is solved by looking for frequently used characters and clues provided by letter patterns and word spacing. Solve the cryptogram shown below, find LuLu's bling and bring it to the next regular Eureka! meeting to collect a prize.

[illegible]

☹️✚☹️✚👉👈☹️☹️👉 ☪️✋💧 🖐️☠️ ✋ ☠️👉✋☀️👉☼ 🏴✋☀️😐 ✚🖐️💧🖐️❄️🖐️☠️👉
























Finds of the Month - Jan

GOLD - Richard Kibler

18 kt. Ring



Richard was on vacation down in Mexico, while swimming in a cinote he spotted this ring sitting on the bottom. He dove down recovered this ring. Well done, way to keep your eyes open Richard.

COIN - Jim Griffin

1901 V Nickel



Jim was detecting the lake bed at Berkeley Park Lake with his MXT with his 4x6 DD coil when he came across this 1901 V Nickel.

JEWELRY - John Hinton

Sterling Silver w/ Amethyst



John was out swinging his MXT equipped with a bigfoot coil on Ruby Hill when he came upon this lovely ring. Keep an eye on those sledding hills when the snow melts.

TOKEN - No Entries

ARTIFACT - Roy Neys

1889 Exposition Watch Fob



Jim was detecting at Berkeley Park Lake with his MXT armed with his 4x6 DD coil when he came across this 1889 Paris, France Exposition watch Fob. A great piece of history that somehow made it's way to Denver. If only this fob could talk!

(Continued from page 3)

As a bonus, the tour included going into the backroom area and seeing where the donations are received and cataloged. We saw a spectacular group of minerals from Peru that were just given before the end of the year so the person could take a tax deduction. We were shown a special X-ray machine for rocks and the area where they photograph specimens. Bruce talked about the research that takes place with the help of volunteers. We were told about the storage buildings, one through four, that housed different types of rocks, minerals, gems, fossils, radioactive rocks etc. The director talked about the many facets of museum work that takes place behind the scenes. The tour was fun and informative.

CSM's Geology Museum accepts donations of specimens, money or time. The Museum is holding a garage type sale starting February 20 and continuing all week with the prices dropping each day. Mr. Geller said there would be lots of books, some maps and minerals. If you want to contact Bruce Geller, call 303-273-3823.

Only a few hundred yards away at the CSM Library, a huge safe holds a large gold and currency display. Terry Weatherly clued us into that, thanks Terry. I spotted many denominations of gold coins there and would be happy to find any one of them.

CSM's Geology Museum ranks second in the nation after the older Harvard's for collegiate museums. We are lucky to have two top museums here in Colorado to see geologic wonders. Only the Museum of Nature and Science has a bigger collection than CSM here in the state. Maybe next year we should check out number one.

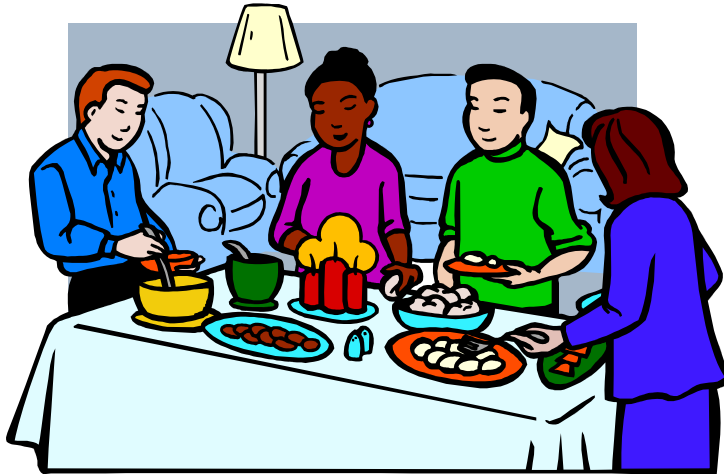
TREASURE HUNTER'S CODE OF ETHICS

- **I WILL respect private property and do no treasure hunting without the owner's permission.**
- **I WILL fill all excavations.**
- **I WILL appreciate and protect our heritage of natural resources, wildlife, and private property.**
- **I WILL use thoughtfulness, consideration, and courtesy at all times.**
- **I WILL build fires in designated or safe places only.**
- **I WILL leave gates as found.**
- **I WILL remove and properly dispose of any trash that I find.**
- **I WILL NOT litter.**
- **I WILL NOT destroy property, buildings, or what is left of ghost towns and deserted structures.**
- **I WILL NOT tamper with signs, structural facilities, or equipment.**

Want to Learn about Jefferson County Ghost Towns

John Steinle, History Education Supervisor of Jefferson County Open Space, will present a program describing these ghost towns on Thursday, February 9th at 6 P.M. at the Hiwan Homestead Museum. Many rare and historic photos will be used to illustrate the talk. This program is sponsored by the Jefferson County Historical Society. Reservations are required and there is a \$5 fee to attend. To make reservations call 720 497-7650 or email Andy Spencer, Education Coordinator at aspencer@jeffco.us

February is our annual potluck and awards banquet



The potluck will begin at 6:30, please bring a dish to share with fellow Eureka members.
The general meeting will begin at it's normal time, 7:30.

2012 CALENDAR

January:

11th - Board Meeting
 13th - General Meeting
 22nd - Club Outing - School of Mines

July:

11th - Board Meeting
 13th - General Meeting

February:

8th - Board Meeting
 10th - General Meeting

August:

8th - Board Meeting
 10th - General Meeting

March:

7th - Board Meeting
 9th - General Meeting

September:

12th - Board Meeting
 14th - General Meeting
 16th - Coinhuna Club Championship

April:

11th - Board Meeting
 13th - General Meeting

October:

10th - Board Meeting
 12th - General Meeting

May:

9th - Board Meeting
 11th - General Meeting

November:

7th - Board Meeting
 9th - General Meeting

June:

6th - Board Meeting
 8th - General Meeting

December:

12th - Board Meeting
 14th - General Meeting



One of the gems locked behind those doors

Behind these locked doors our tour continued.



We were told "**NO** touching of the samples" while behind the scenes.

Eureka! Treasure Hunters Membership Handbook Excerpts

Annual Potluck & Awards Presentation

The February club meeting is the Annual Potluck and Awards Presentation. Special presentations are given for Finds of the Year, the Gene Kotlan Award, the Dan Sprouse Award, and the Charles A. Johnston Award.

Finds of the Year

All winning entries in the Finds of the Month from January through December are eligible to be entered into the Find of the Year. Voting for these awards takes place at the February meeting with all entries displayed. The winner in each of the five categories is announced and awarded at the Annual Potluck Dinner and Awards Presentation held in February.

The Dan Sprouse Memorial Award

(also known as the President's Award), This award is presented by the president to the club member who he feels helped him the most during the preceding year.

The Gene Kotlan Award

The winner was selected by general membership secret ballot vote at the preceding December club meeting. The recipient is chosen on the basis of the fellow club member who has contributed the most for the good of the club during the preceding year. Since the votes are tallied by an outside source, the winner is not known to anyone in the club until presentation of the awards at the February meeting.

The Charles A. Johnston Award

(also known as the Member of the Year Award) This member is chosen by the board members and presented to the non-board club member who has persistently and unselfishly volunteered his or her time, materials, and services to the club during the preceding year.

Who are Gene Kotlan, Dan Sprouse and Charles A. Johnston?

Gene Kotlan was one of the original founders of the Eureka! Treasure Hunter's Club, Inc. in January of 1973.

Eureka! Treasure Hunters Membership Handbook Excerpts

He was a local metal detector dealer who sponsored the initiation of the club. Gene died of a heart attack while metal detecting.

Dan Sprouse was an enthusiastic Eureka! Member and Club President for two years. He wore out a White's 6—DB detector and, after only 2 1/2 years in the hobby, passed a count of 50,000 coins retrieved. Dan died of cancer midway through his second term as president.

Charles A. Johnston was one of the organizers of the club. He always found something “good” or interesting whenever he searched and shared his interest in history by involving the club with various historical society searches. He died in September 1991.

Membership Dues and Voting Rights

Currently, annual membership dues, for age 18 and older are \$30 for single membership, \$36 for a family membership. Family memberships are those with two adults and/or a single parent with any children under the age of eighteen residing in one household in a domestic situation. Each person with a single membership will have one vote. Each adult (person over the

age of 18) in a family membership will have one vote. Renewal time for memberships is in April each year. Members who have not renewed by the May meeting are excluded from further club activities. Payment can be made by cash or by check made payable to the Eureka! Treasure Hunter's Club, Inc. Payment is made to club treasurer. Payments made by existing members are not prorated. Membership dues are determined and voted on by the Executive Board by April of every year.

Dues are used for the on-going month-to-month and year-to-year operation of the club.

Eureka! Treasure Hunters Members Service Directory

RL Vending Inc.

We Treat you Right!

Richard and Linda Kibler

303-517-1189

rlkibler@earthlink.net

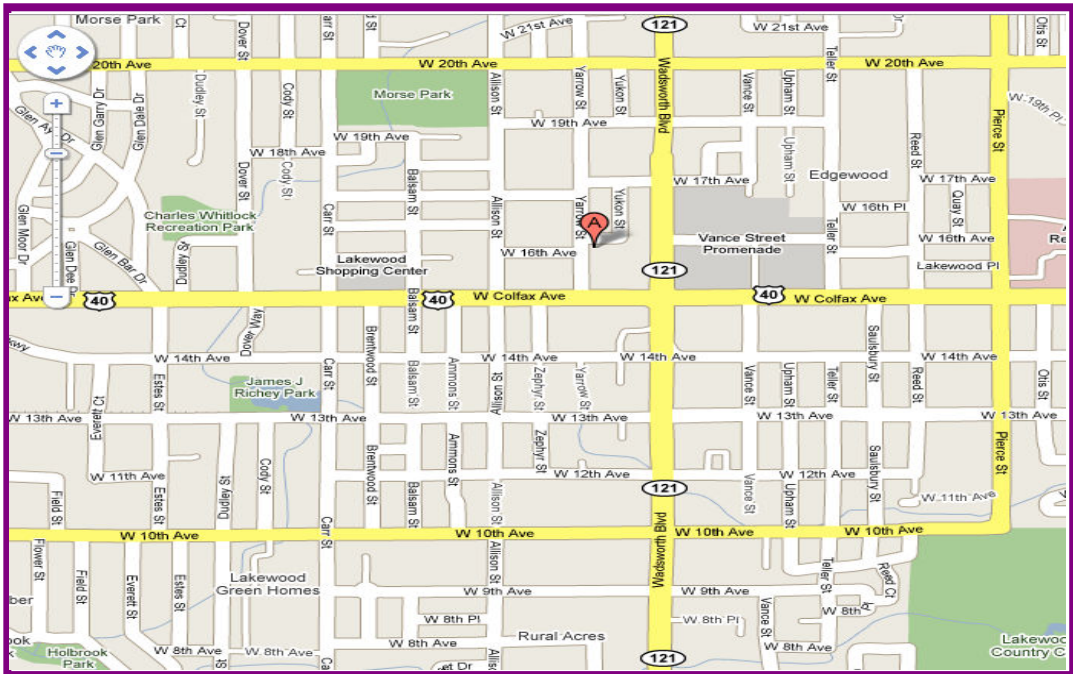
Wanted: Eureka members. Go to www.eurekathc.com for our membership form.

Use this space for FREE as an Eureka! Member—advertise your unwanted equipment or use it to find a hunting partner.

Use this space for FREE as an Eureka! Member—advertise your unwanted equipment or use it to find a hunting partner.

Use this space for FREE as an Eureka! Member—advertise your unwanted equipment or use it to find a hunting partner.

Eureka! Club meetings are held on the second Friday of each month, 7:30 p.m., on the second floor of the Clement Community Center, 1580 Yarrow St., Lakewood, Colorado.



In-Town Hunt Schedule

If this sounds familiar, the rules regarding in-town hunts bear repeating. Again, I want to reiterate in-town hunt rules for those who seem to have missed the obvious by failing to read and follow the instructions the club has provided. We want you to put on hunts. They are designed to be fun, first and foremost. They provide a context outside of the meetings for fellowship with club members. To put on an in-town hunt you **MUST**:

- Schedule with the Huntmaster.
- Provide a plan.
- Provide flyers.
- Ensure the hunt rules are discussed **BEFORE** the hunt.
- Police the hunt.
- The hunt master for any particular hunt can decide open hunt (non-members may hunt) or members only.
- Write a story for the newsletter and send it and accompanying photos to the newsletter editor prior to that month's deadline.

To ensure the continuation of this hobby and to provide the best impression of Eureka! and its membership, you, as hunt master, **MUST** enforce all rules, including:

1. Pouches to store finds and trash **MUST** be worn and used at all times during the hunt.

2. All hunters must wear headphones.

3. Absolutely no tolerance of holes left open. A first warning, followed by a time-out or expulsion from the hunt, will usually get people's attention

4. Hunters digging and leaving trash on the hunt field should receive the same treatment discussed above.

All hunts will need to be okayed by Huntmaster (Roy Neys) prior to officially being put in the newsletter and put on.

Failure to follow the guidelines may result in hunts being cancelled.

F
I
N
D
S

O
F

T
H
E

M
O
N
T
H

GOLD CATEGORY

Roy Yerby.....Cripple Creek Gold Ring
Roy Neys.....**18 kt. Ring**

JEWELRY CATEGORY

Jim Griffin.....Yellowstone Park Ring
Jim Griffin.....I.D. Bracelet “Billy Hunter”
Roy Yerby.....Italian Religious Medallion
Roy Yerby.....Silver Ring
John Hinton.....Dolphin Ring
John Hinton.....Silver Ring with Amethyst Stone

COIN CATEGORY

Cindy Bockenstedt.....1898 Indian Head Cent
Roy Yerby.....Cuban 5 Cent
Roy Yerby.....1000 Peso
Roy Neys.....German 1901 Zwei Mark
Jim Griffin.....1901 V Nickel

Token Category
No Entries

ARTIFACT CATEGORY

Cindy Bockenstedt.....Chamberlain’s Bottle
Roy Yerby.....Silver Lieutenants Bar
Jim Griffin.....**Watch Fob**

FIND-OF-THE-MONTH CATEGORIES

Gold: Natural gold (flakes, nuggets, wire) stamped karat alloy content or obvious custom alloy item

Jewelry: objects of metal often set with gems and worn for personal adornment, except jewelry qualifying for the GOLD category.

Coin: a piece of metal issued by governmental authority as money (includes GOLD coins of any nation).

Token: a piece resembling a coin issued as money by some person or body not of a governmental authority; can be redeemed for services or specified items.

Advertising

Classified business-card-sized text advertising is free to members for non-business ads. Commercial display ads are available to anyone at the following charges:

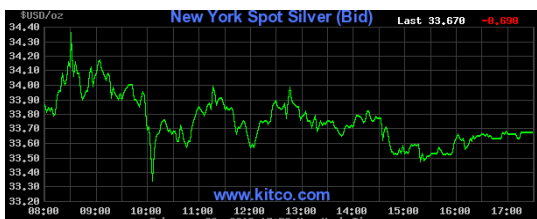
Business card size, \$6.00 per month
 1/4 page, \$12.00 per month
 1/2 page, \$24.00 per month
 full page, \$48.00 per month

Advertisers are encouraged to take out ads for 12 months and receive a 3-month discount. No other discounts apply. The treasurer must receive any required payments for commercial ads prior to their inclusion.

Gold Prices



Silver Prices



GOLD-N-DETECTORS

A METAL DETECTING &
 PROSPECTING
 CENTER



(303) 278-6622

802 Washington Ave.
 Golden, CO 80401

E-mail: Bill@goldendetectors.com

"Denver area's award winning hobby store, where we do what we sell."

- Metal Detectors
- High Bankers
- Rock Tumblers
- Books
- Goldpans
- Dredges
- Rock Picks
- Accessories

Open 9-6 Monday through Saturday,

VISA, MasterCard, Discover

BUYING-SELLING RARE COINS & CURRENCY
 PRECIOUS METALS, DIAMONDS
 GOLD AND SILVER JEWELRY

COLFAX COIN CENTER

RICK D. CULVER
 PROFESSIONAL NUMISMATIST

843 WADSWORTH BLVD.
 303-232-0763

LAKEWOOD, CO, USA 80214
 FAX 303-232-0867

Contact List

Officers	Name	Home Phone	E-Mail
President	Ron Erickson	(303) 466-0453	rweuffda@comcast.net
Vice President	Steve Montaño	(303) 460-8206	actionstriping@aol.com
Secretary	Louise Smyth	(303) 477-4295	louiseasmyth@msn.com
Treasurer	John Steele	(720) 530-6169	johnsteele400@hotmail.com
Board 2013	Mary Sable	(303) 985-4385	rmrsable@aol.com
Board 2013	Terry Weatherly	(303) 423-2228	tweatherly07@comcast.net
Board 2013	Roy Neys	(303) 936-6218	coilsearch@msn.com
Board 2013	Bernie Watts	(303) 526-5383	bernie@backshopenterprises.com
Board 2012	Jeff Lubbert	(303)-487-0438	coindigr@hotmail.com
Board 2012	Sheri Muehlbauer	(303)-838-4119	smuelhbauer@msn.com
Board 2012	Terry Krelle	(303)-914-0093	tkrelle@gmail.com
Newsletter			
Editor (interim)	Jeff Lubbert	(303) 487-0438	coindigr@hotmail.com
Internet Web Site			
Webmaster	John Lambe	(303) 840-8094	jlambe@earthlink.com
Volunteers			
PERT	Terry Krelle	Nametags	Annette Krelle
HART	Cindy Bockenstedt	Coin Purchases	
Hunts Coordinator	John Steele & Mel Edington	Greeters	Rose Abercrombie
Finds Table		Orientation	
Finds Table	Bob Flier	Speakers	Steve Montano
Drawing Table		Trophy Gal	Louise Smyth
For general information contact the hotline: (303) 595-5448			
Visit our club on the Internet: http://www.eurekathc.com			



The basements most popular display, fluorescent



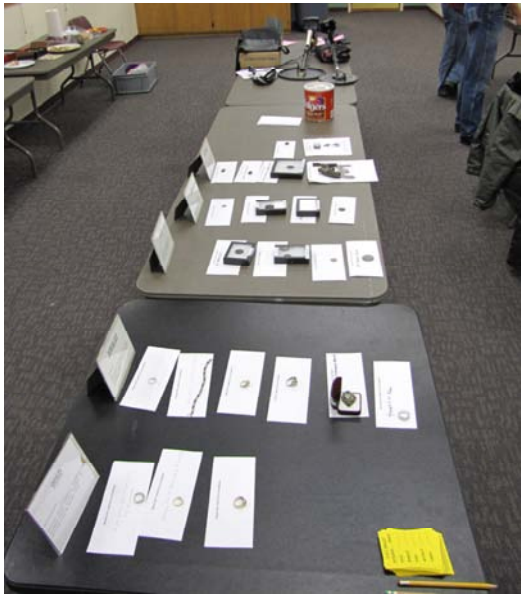
Steve beside an iron meteorite



Just some of the gold samples



An incredible gem sample



2011 Finds of the Month, all contenders
for Find of the Year



Voting for January's 2012 FOM



One of our monthly drawing winners,
Addie Otis



The gold coin winner, Jim Geith

What is the PLP

Recently while listening to an internet radio show Ron and I learned of an organization that fights for the right to keep the public lands open to the public for recreational uses such as prospecting and metal detecting. The name of this organization is Public Lands for the People, or PLP.

Though this organization is not one that Eureka is associated with at this time, I thought that it might be of interest to our members and worth looking into.

I have included some information on what PLP has reported as to their accomplishments and their history. Though I have just learned of this organization I firmly believe in what their cause seems to be. Each one of us has been effected by laws, interpretation of laws, park rules and policies that take away our rights to use public lands for recreational purposes.

While on the PLP web page I noticed that they are having a fund raising raffle and I have attached the list of prizes that they will be giving away. They will be giving away some amazing prizes that I would absolutely love to win. There is also contact information so that you may purchase the raffle tickets.

WHO IS PLP?

PLP was constructed for the purpose of representing all outdoor user groups and individuals that are interested in keeping public and private lands open to prospecting, mining, and outdoor recreation on a non-discriminatory basis! PLP assists groups to join forces to maintain the laws and rights of all citizens on public and private lands (Federal, State and City). PLP will assist with representation at public hearings of government agencies that are proposing limitations and restrictions on the lands that belong to the people. PLP DOES LITIGATE! We will file injunctions, when necessary, to prevent governmental agencies from discussing public issues behind closed doors and calling them "personnel meetings". We will come to the aid of, and give individual attention to, persons or groups who are being harassed, intimidated or misled by people in authority (in or out of uniform) who are attempting to enforce their own ideas or opinions of laws, rules or regulations, rather than the actual laws, rules or regulations, and what it actually means.

Remember.... PUBLIC LANDS FOR THE PEOPLE Means....

Our right to Use Public Lands, Not to Abuse Public Lands.

What does PLP do for you?

1. PLP filed a lawsuit charging California for illegally passing a bill (SB670) into law prohibiting suction dredge mining.
 2. PLP filed a lawsuit against Eldorado National Forest for their illegal closures of over 2200 roads in their Travel Management Plan (TMP). PLP is also making comments in several other forests on their TMP.
 3. PLP is in court fighting the California Department of Fish and Game who has violated a Court order by failing to do an Environmental Impact Report (EIR) on suction dredging in California.
 4. PLP assists on many individual issues that concern small-scale miners.
 5. PLP assists miners in other states, and those state representatives.
 6. PLP makes formal comments on the Federal Register (FR) for the US Forest Service (USFS) road closures, trying to cite miners criminally, & rule making changes.
 7. PLP assists miner filing "takings" case against BLM for taking a structure & mineral estate. BLM donated away leaving miner as legal owner/claimant & taxpayer w/o due process or compensation. Miner prevailed.
 8. PLP and the miners prevailed in Siskiyou Regional Education Project (SREP) vs. U.S. Forest Service when the USFS attempted to force dredgers into a Plan of Operation.
 9. PLP was a party to 2 lawsuits in the Center for Biological Diversity (CBD), vs. USFS and CBD vs. the BLM. PLP and the miners prevailed
 10. PLP and Dee Stapp prevailed in a lawsuit against the BLM on separating bond issues of occupancy and casual use mining operations.
 11. PLP participated in the Washington, Oregon, and California Water Resources Board study on turbidity and mercury as a method to stop suction dredging and similar issues there.
 12. PLP assisted with Washington State Resources Coalition and others in the rule making process on suction dredging.
 13. Made legal & scientific comments & was instrumental in defeat of CA Bill AB 1032.
- PLP strives to be involved with issues that affect the small-scale mining community. We would not be able to continue these battles without the past support of its membership

Prize list - PLP Legal Fund Raffle

June 21, 2012

PUBLIC LANDS FOR THE PEOPLE INC.
501 C-3 NON PROFIT ORG.
Est. 1990

Two Week Trip to Alaska all expenses paid, includes air fare \$ 3500.00
Donated By - GOLD PROSPECTORS OF AMERICA (GPAA)

Minelab Metal Detector #4800 \$6295.00
Donated by - MINELAB USA

Keene 4" Honda Suction Dredge \$3175.00
Donated By - KEENE ENGINEERING

One Ounce of Gold \$1700.00 +
Donated by - ROGER PLATA

Keene 151 Vibrostatic Dry Washer \$1495.00
Donated By - KEENE ENGINEERING

Whites GMT Metal Detector \$ 800.00
Donated By - WHITES ELECTRONICS

Fisher Gold Bug Metal Detector \$ 800.00
Donated By - FISHER LABS

One Week Trip To Roaring Camp (1 or 2 People) \$ 750.00
Donated By - ROARING CAMP

Pinch Of Gold For PLP (One 1/2 Ounce And Climbing) \$ 750.00 +
Donated by - PLP CONTRIBUTORS

20 - One Ounce Silver Rounds \$ 700.00 +
Donated By - AAA PRECIOUS METALS (Portland, Or.)

Gold Cube With Stand And Pump \$ 480.00
Donated By - MIKE PUNG

Two - One Year Memberships To Golden Caribou Mining \$ 250.00 ea.
Donated By - GORDON AND BARRY BURTON

Columbian Amber \$ 300.00
Donated By - GUY NESBIT

Crystalline Gold \$ 100.00
Donated By - SCOTT WARNER

Broll Wheeled Cart \$ 85.00
Donated By - BROLL TOOLS

Tickets are \$1.00 each or \$10.00 for a book of 12

The Tickets can be ordered and paid for

By calling 818-363-0963
Mail @

PLP
c/o Guy Nesbit
PO Box 7908
Porter Ranch Ca. 91326

NOTES:
